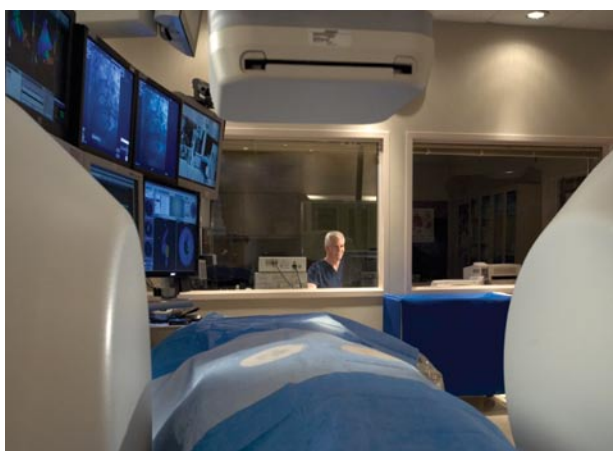






## Delivering the vision of remote maneuvering technology.

At Biosense Webster, our innovation is focused on making real differences. Case in point: the new CARTO™ RMT Electroanatomical Navigation System. By integrating the accuracy and precision of our industry-standard 3-D mapping and navigation systems with the Niobe® magnetic steering technology, we're bringing the full potential of remote navigation to electrophysiologists.



*Guided by the CARTO™ RMT System, an electrophysiologist utilizes computer-controlled magnetic fields to remotely steer a specially-designed catheter through the cardiac structure and apply targeted therapy.*



*The on-screen menu bar provides instant access to major integration features for enhanced ease of use.*

### Automated navigation, for enhanced reproducibility.

By automating catheter direction and movement with remote point-and-click tools, the CARTO™ RMT System and Niobe® integrated solution enhances case-to-case reproducibility, and delivers consistent excellence across a wide spectrum of procedures. With new precision, speed, and confidence, physicians can focus on patients rather than manual catheter manipulation.

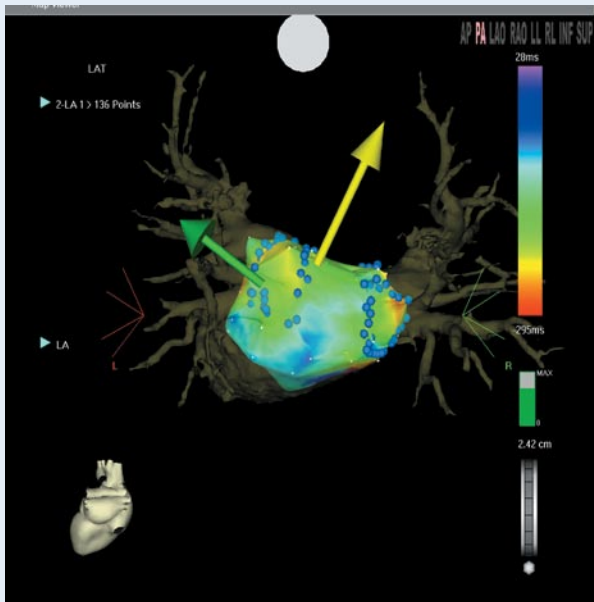
### A new position on safety and efficiency.

Because procedures are directed from remote control rooms, exposure to fluoroscopy is reduced, and the strain of wearing heavy lead vests is mitigated.

- > The optimal tip catheter orientation provided by magnetic tip-to-tissue contact streamlines procedures and improves reproducibility.
- > The soft, flexible catheter utilized for all procedures may reduce trauma.

## The CARTO™ RMT System difference

- > Only technology fully integrated with the Niobe® System.
- > 3-D imaging integrated with remote steering enhances reproducibility.
- > Permits single operator for mapping and catheter maneuvering from the CARTO™ RMT System.
- > Facilitates easy access to difficult locations.
- > Remote control can help make procedures more efficient with less fluoroscopy exposure.
- > Detailed electroanatomical images facilitate accurate mapping and targeting.
- > Familiar CARTO™ XP System format, including new impedance mapping and area calculation measurements.
- > Compatible with CARTOMERGE™ Image Integration Module (sold separately).



As the only electroanatomical system fully integrated with the Niobe® System, the CARTO™ RMT System enhances visualization of anatomic variation via 3-D scans or map reconstructions, permits rapid diagnosis, and facilitates maneuverability to target sites with a continuously visible catheter icon.

The easy-to-use, customizable on-screen user interface provides different viewing options. The optional CARTOMERGE™ Image Integration Module is fully compatible with the CARTO™ RMT System.

**CARTO™** **RMT**

## CARTO™ RMT ELECTROANATOMICAL NAVIGATION SYSTEM SPECIFICATIONS (SOFTWARE VERSION 8.0)

### STANDARD CONFIGURATION

CARTO™ RMT UNIT	PIU	LOCATION PAD
9.4"H x 14.6"W x 10.6"D (23.8H x 37W x 27D cm)	8.3"H x 13.3"W x 5.1"D (21H x 33.5W x 13D cm)	6.7"H x 23.6"W x 24.8"D (17H x 60W x 63D cm)

### ELECTRICAL

CARTO™ RMT UNIT	WORKSTATION	MONITORS
110 – 120V AC, 60 Hz, 1.3A	110 – 120V AC, 60 Hz, 3.0A	AutoDetect 100–240V, 50/60Hz
220 – 230V AC, 50 Hz, 0.63A	220 – 230V AC, 50 Hz, 1.5A	AutoDetect 100–240V, 50/60Hz

### ENVIRONMENTAL CONDITIONS

OPERATING TEMPERATURE	RELATIVE HUMIDITY	ALTITUDE
50° – 104° F (10° – 40° C)	30% – 75% (operating)	10,000 ft (3,048 m)

### ORDERING INFORMATION

CATALOG #	EUROPEAN ORDERING #	PRODUCT DESCRIPTION
M550000	CARTORMT	CARTO™ RMT Electroanatomical Navigation System*
CARTOMERGE™	XPMERGE	CARTOMERGE™ Image Integration Software Module**
S7001	39D-76X	Stockert RF Generator**
S7019	39D-79X	Stockert RF Generator Remote Control**

\*Includes the following components: computer workstation and monitor, COM Unit, Patient Interface Unit (PIU), foot pedal, grounding cable, power supply cord, optical cable, patient cable, printer. Assorted accessory items as needed for individual location installation.

\*\*Sold separately.



#### **Biosense Webster, Inc.**

3333 Diamond Canyon Road  
Diamond Bar, CA 91765, USA  
Tel: 909-839-8500  
Tel: 800-729-9010  
Fax: 909-468-2905  
www.biosensewebster.com

#### **Biosense Webster**

A Division of  
Johnson & Johnson Medical NV/SA  
Drève Richelle 161 Building H  
B-1410 Waterloo, Belgium  
Tel: 32-2-352-1411  
Fax: 32-2-352-1492

Caution: Federal law restricts these devices to sale by or on the order of a physician. Please refer to the instructions for use accompanying each device before use. For healthcare professionals only. As part of Biosense Webster policy of continuous development, we reserve the right to change product specifications without prior notification.

© Biosense Webster, Inc. 2006 All rights reserved.  
The third-party trademarks used herein are trademarks of their respective owners.  
Order No. B0048 Printed in USA. 0-000-0000-0

