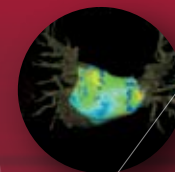
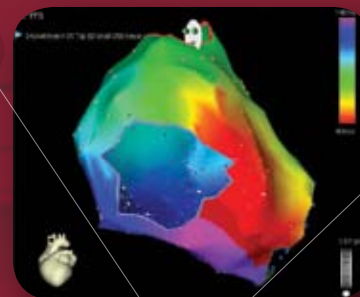


3D Navigation Concepts for EP Fellows

Endo-Surgery Institute, Cincinnati OH

Biosense Webster will provide round-trip coach class airfare from your home city, ground transportation at the program destination, hotel accommodations (room and tax for the nights of September 7 - 8, 2008), and meals associated with the program for the education program attendee. Biosense Webster is not responsible for costs associated with guests.



3D Navigation Concepts for EP Fellows September 8-9, 2008

A CARTO® XP System

Training Program

➤ *Ideas making a difference*



Biosense Webster, Inc.

3333 Diamond Canyon Road

Diamond Bar, CA 91765, USA

Tel: 909-839-8500

Tel: 800-729-9010

Fax: 909-468-2905

www.biosensewebster.com



→ 3D Navigation Concepts for EP Fellows

A CARTO® XP System Training Program

Comprehensive technical and clinical understanding is the key success factor for rapidly mastering the CARTO® XP EP Navigation System. The 3D Navigation Concepts for EP Fellows Workshop is focused on increasing the understanding of mapping fundamentals in order to quickly gain the knowledge and confidence to use the CARTO® XP System.

This workshop is designed for first year EP Fellows. Admittance into the program requires completion of an on-line modular training program, which covers the fundamentals of connectivity and electroanatomical mapping with the CARTO® XP System.

While at the Institute, participants are trained on the CARTO® XP System using state-of-the-art equipment. This intensive and diverse two-day program includes in-depth clinical software training, theoretical lectures, and practice in the animate laboratory. Topics include Advanced Software Features, 3D Mapping Concepts, 3D Map Interpretation, Cardiac Anatomy, and Image Integration using the CARTOMERGE® Software Module.

Faculty

Dr. Peter Spector | University of Vermont College of Medicine, Fletcher Allen Health

Course Location

The 3D Navigation Concepts for EP Fellows Workshop will be held at the Ethicon Endo-Surgery Institute in Cincinnati, OH. This world-class educational facility provides a forum for clinical and healthcare professionals to exchange information and ideas.

Accommodations

The Embassy Suites Blue Ash
4554 Lake Forest Drive
Cincinnati, Ohio 45242
513-733-8900

Registration

To register for this educational workshop, please contact your local Biosense Webster representative.

Agenda

Day 1

- Introduction to CARTO® System Technology
- Advanced Software Exercise
- 3D Mapping Concepts and Map Interpretation
- Window of Interest Exercise
- Mapping with the CARTO® XP System (Peter Spector, MD)
- CARTOMERGE® Module Overview
- CARTOMERGE® Module Hands On Exercise
- CARTOMERGE® Module Case (Peter Spector, MD)

Day 2

- Animate lab using the CARTO® XP System
- Additional CARTOMERGE® Module Hands On Experience

