

US Advanced Navigation Concepts Program Dates

Endo- Surgery Institute, Cincinnati OH

February 21-22, 2008

September 8-9, 2008

March 12- 13, 2008

September 10-11, 2008

April 15-16, 2008

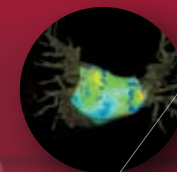
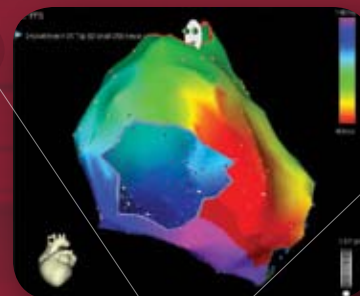
October 22-23, 2008

May 7-8, 2008

November 11-12, 2008

August 26-27, 2008

December 9-10, 2008



Advanced Navigation Concepts

A CARTO® XP System

Training Program

➤ Ideas making a difference



Biosense Webster, Inc.

3333 Diamond Canyon Road

Diamond Bar, CA 91765, USA

Tel: 909-839-8500

Tel: 800-729-9010

Fax: 909-468-2905

www.biosensewebster.com



→ Advanced Navigation Concepts

A CARTO® XP System Training Program

A Complete Training Experience Comprehensive technical and clinical understanding is the key success factor for rapidly mastering the CARTO® XP EP Navigation System. An important component in accomplishing this goal is the selection of support staff that will operate the system independently. These individuals will participate in an educational experience that is both professionally and personally rewarding. At the completion of this training program, these individuals will be considered your CARTO® XP System experts.

The CARTO® XP System Advanced Navigation Concepts Program ensures a complete understanding of the system fundamentals in order to quickly gain the knowledge and confidence to become a true Electroanatomical Navigator!

Introductory Training To ensure a successful learning experience, proper on-site training with a Biosense Webster, Inc. Professional Education Specialist must be completed prior to attending the Advanced Navigation Concepts Program.

This on-site training is designed to orient physicians and staff to the CARTO® XP System. Upon completion of Introductory Training, participants will have mastered System Setup, Software Applications, Mapping Tips and Troubleshooting. On-site training can be delivered over a series of in-services that can be scheduled at your convenience.

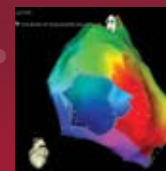
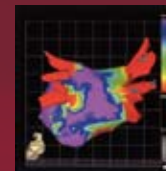
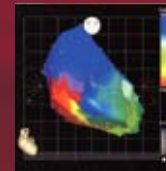
At the completion of the in-service training, it is recommended that a minimum of 5-7 CARTO® XP System procedures be performed prior to registering for the Advanced Navigation Concepts Program to allow for an optimal training experience.

Advanced Navigation Concepts Upon completion of Introductory Training, local Professional Education support can provide you with registration details for the Advanced Navigation Concepts Program.

The individuals identified as your CARTO® XP System experts are invited to attend the Advanced Navigation Concepts Program at the Endo-Surgery Institute in Cincinnati, Ohio. The Endo-Surgery Institute is a world-class education facility that provides a forum for clinical and healthcare professionals to exchange information and ideas.

Admittance into the program requires completion of an on-line modular training program, which covers the fundamentals of connectivity and electroanatomical mapping with the CARTO® XP System. Registration is subject to completion of online training prerequisites and course availability.

While at the Institute, participants are trained on the CARTO® XP System using state-of-art equipment. This intensive and diverse two-day program includes in-depth clinical software training, theoretical lectures, and practice in the animate laboratory. Topics include Advanced Software Features, 3D Mapping Concepts, 3D Map Interpretation, Cardiac Anatomy, and Image Integration using the CARTOMERGE® Software Module.



To Enhance Your Learning Experience

- Ensure that all staff who will be involved in the setup and operation of the CARTO® XP System are present for the on-site in-services.
- Perform 5-7 straightforward CARTO® XP System procedures prior to attending the Advanced Navigation Concepts Program to better prepare the participants for training in Cincinnati. If the cases that are scheduled turn out to be non-inducible and the Professional Education expert is present, consider creating a chamber reconstruction as you will gain a tremendous amount of experience in software manipulation, catheter navigation and map interpretation.
- The staff that has been identified to attend the Advanced Navigation Concepts Program in Cincinnati, OH, should complete as much online training as possible. In addition to the required training modules, each user can add additional training modules to their transcript to further their understanding of the CARTO® XP System."
- Be prepared to be an active participant in this day and a half course. This is your opportunity to ask questions and gain invaluable experience.
- Do not let more than two weeks lapse after the Advanced Navigation Concepts Program before performing CARTO® XP System procedures. Remember the old saying, "If you don't use it, you lose it!"