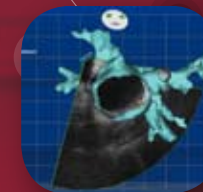


Advanced Interactive EP Workshop
ACUNAV™ and CARTOSOUND™
Course Dates

June 4 - 5, 2008

September 24 - 25, 2008

November 5 - 6, 2008



Advanced Interactive EP Workshop:

Transseptal Access for the Management of Arrhythmias and CARTOSOUND™ Mapping Concepts



Biosense Webster, Inc.

3333 Diamond Canyon Road
Diamond Bar, CA 91765, USA

Tel: 909-839-8500

Tel: 800-729-9010

Fax: 909-468-2905

www.biosensewebster.com

©Biosense Webster, Inc. 2008 All rights reserved.
Order No. 00000 Printed in USA. 0108000.0

◆ Ideas making a difference



→ Advanced Interactive EP Workshop: Transseptal Access for the Management of Arrhythmias and CARTOSOUND™ Mapping Concepts

Overview:

The objective of this one and a half day course is to train the Electrophysiology Fellow or practicing EP Physician in the procedure of obtaining transseptal access as well as mapping concepts using the CARTOSOUND™ Image Integration Software Module. The course curriculum involves didactic sessions discussing the anatomically guided approach to transseptal access as well as an intra-cardiac echocardiography guided approach utilizing the ACUNAV™ Catheter. The curriculum also includes case demonstrations using the CARTOSOUND™ Image Integration Software Module. Students will be given the opportunity to participate in hands-on exercises to increase proficiency in building maps using the CARTOSOUND™ Module and to explore approaches to obtaining Transseptal Access. Simulation training through the use of a Transseptal Simulator and a live animate lab is featured to assist the physician in gaining competency in the procedure of transseptal access to the left atrium.

Faculty

Dr. Peter Spector | University of Vermont College of Medicine, Fletcher Allen Health
Dr. Daniel Lustgarten | University of Vermont College of Medicine, Fletcher Allen Health
Dr. David Callans | The Hospital of the University of Pennsylvania
Dr. Miguel Valderrabano | Methodist DeBakey Heart Center

Course Location

The Transseptal Access/Advanced Interactive Ablation program is held at the Endo-Surgery Institute, located in Cincinnati, Ohio. This world-class education facility provides a forum for clinical and healthcare professionals to exchange information and ideas.

Accommodations

The Embassy Suites, Blue Ash
4554 Lake Forest Drive
Cincinnati, Ohio 45242
513-733-8900

Registration

To register, please visit the Professional Education section of BiosenseWebster.com

Agenda

Day One

8:00a-8:10a	Welcome and Introduction
8:10a-9:00a	Anatomic Approach to Transseptal Access
9:00a-9:30a	Basic Overview ACUNAV™ Ultrasound
9:30a-10:10a	Ultrasound guided approach to Transseptal access
10:10-10:20	Break
10:20a-11am	Complications and Pericardial Access
11a-1pm	Heart Anatomy Demonstration and Hands-on Simulator
12noon-	Working lunch
1pm-1:45	CARTOSOUND™ Overview presentation
1:45-3pm	CARTOSOUND™ Case presentation (Physician lecture)
3pm –4:30p	Hands on Simulation exercise with CARTOSOUND™
4:30-4:45	Wrap-up and Adjourn

Day Two

8am-12:30pm	Animate lab with Simulators Hands on Animate Exercise encompassing both approaches to obtaining Transseptal Access and obtaining proficiency in building CARTOSOUND™ Maps
-------------	--